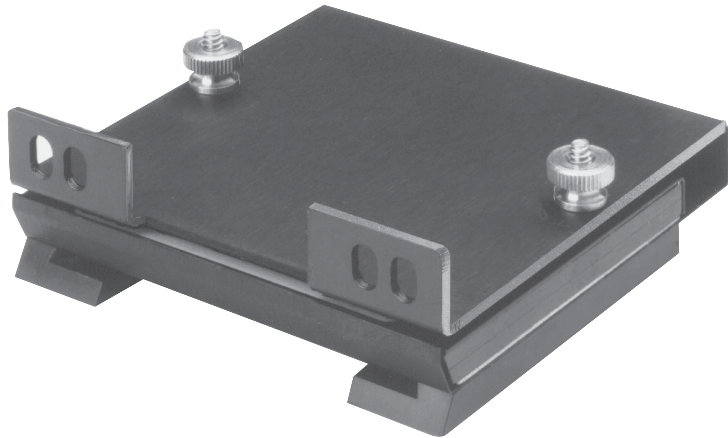


# SKL-03P

## Common Code Card Reader



SKL-03P Card Reader

Insertion of a properly encoded magnetic card sets up tumblers within the reader. The proper setting of the tumblers allows the card to activate a switch, thus closing or opening a circuit. The switch can be used to turn on or off any circuit (or device) that does not exceed its power limit.

The SKL-03P Card Reader can provide a virtually unlimited number of possible codes. Codes are set by placement of the appropriate SKP-03 Program Cartridge onto the card reader. Grace (overlap) cartridges may be used to allow two different codes to operate simultaneously. Grace cartridges permit a smooth transition between codes.

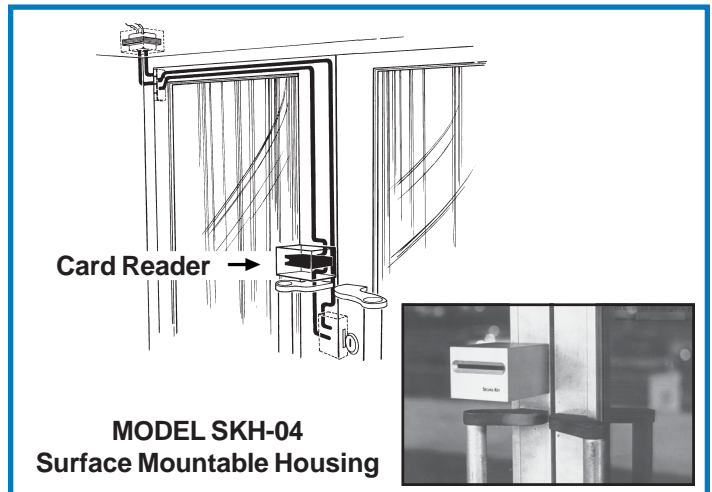
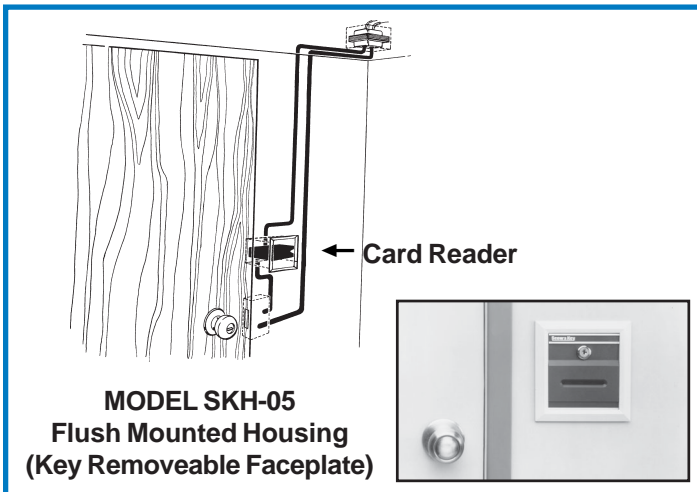
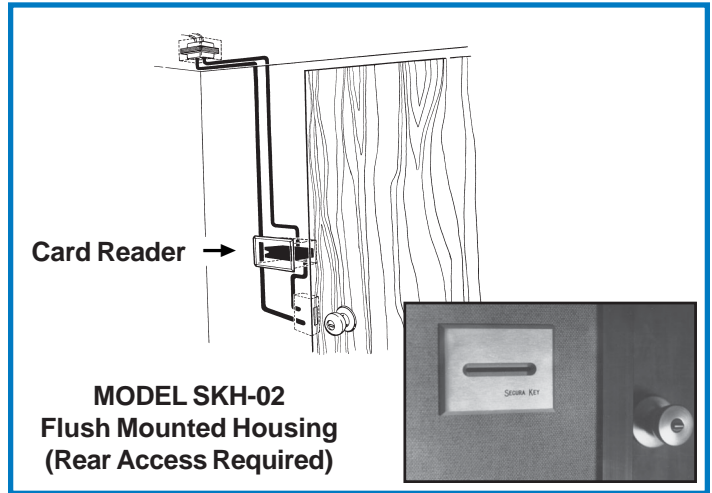
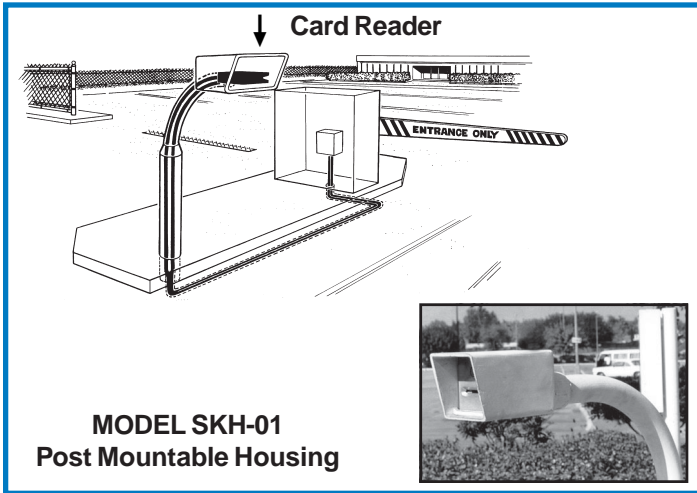
Typical applications include: opening parking gates; opening entrances to private clubs, computer installations and other restricted areas; controlling access to tennis courts; or in any circumstance where access control requirements are consistent with the capabilities of the reader.

- **Common Code Card Reader**
- **Unlimited Number of Cards Available**
- **Card Code Easily Changeable in the field with a Program Cartridge.**
- **Normally Open or Normally Closed Contacts**

# SKL-03P SPECIFICATIONS

<b>PHYSICAL</b>	Depth 3.375 in. (8.57 cm) Height 1.125 (2.86 cm)	Width 3.125 in. (7.94 cm) Weight 5 oz. (142 gm)
<b>POWER REQUIREMENTS</b>	None	
<b>OUTPUTS</b>	SPDT contact, 5A; 250 VAC or 28 VDC Normally Open and/Or Normally Closed	
<b>ENVIRONMENT</b>	Ambient Temperature Humidity	Up to 180° F (82° C) 95% Maximum (non-condensing)
<b>OPERATIONAL</b>	Card Compatibility	Standard CR 80 Card size 2.125 x 3.375 in. (5.40 x 8.57 cm) Uses SKC-03 Cards

## TYPICAL INSTALLATIONS



### WARRANTY (U.S. and Canadian)

"This product is warranted against defects in materials and workmanship for a period of 2 years from the date of purchase. Secura Key shall, at its option, either replace or repair this product, if returned to us freight prepaid within the warranty period. This warranty does not include freight, taxes, duties, or installation expenses. THE WARRANTY SET FORTH ABOVE IS EXCLUSIVE AND NO OTHER WARRANTY, WHETHER WRITTEN OR ORAL, IS EXPRESSED OR IMPLIED. SECURA KEY SPECIFICALLY DISCLAIMS ANY IMPLIED WARRANTIES OR MERCHANTABILITY AND FITNESS FOR A PARTICULAR PURPOSE. The remedies provided herein are the buyers' sole and exclusive remedies. In no event shall Secura Key be liable for direct, indirect, special, incidental or consequential damages (including loss of profits), whether based on contract, tort or any other legal theory." Contact Secura Key for Card/Tag and Export Warranty Policies.

### DISTRIBUTED BY:

**Secura Key**  
A Division of SOUND CRAFT Inc.  
www.SecuraKeyStore.com  
(800) 878-7829  
sales@securakeystore.com